



**Automatic rotational checkweighers is intended to operate in a technological line manufacturing products packed into cylindrically shaped containers, e.g. aerosols, sprays, glass bottles, plastic bottles, etc.**

Control unit is based on Windows Embedded software and SQL database server. Dual core industrial computer is designed for use in hard industrial conditions, and cooperation with specially prepared Windows system makes this platform very stable and allows for holding set parameters. Graphic communication panel makes the operation very easy and intuitive, which has been already appreciated by users. Rotational device is not equipped with its own conveyor belt, it is mounted over an existing one, which significantly shortens and simplifies scale installation. Scale is electrically powered, which provides its high durability and reliability, and precision of containers positioning.

## Application:

The rotational scale is intended to control single bottles and packages like aerosol. System is operating in accordance with regulation on Control of Prepackaged Goods.

The system is frequently used in the following industrial branches:

- chemical,
- pharmaceutical,
- Distilling industry,
- Food processing industry.

## Functions:

- Rotational scales provide 100 % control of goods transported on the processing line. Goods that do not meet set thresholds are discriminated from the line.
- Control of goods in accordance with regulation on Control of Prepackaged Goods,
- Records on data on controlled goods,
- Defining access level for each user,
- Editable access level for scale user,
- Discrimination of goods with incorrect mass,
- Extended statistics conducted in real time,
- Built-in line performance meter,
- Reports generated automatically in accordance with the weighing mode,
- Export of reports to PDF files,
- Saving weighing records to a file,
- Cooperation with peripheral devices in a processing line,
- Remote start and stop of the scale,
- Line congestion detection,
- Detection of missing goods,
- Detection of a filled tray with waste,
- Cooperation with computer software E2R and application Checkweigher SWD,
- Automatic adjustment process,
- Gate blocking containers feeding,
- Adjustable swivel wheel in real time,
- „PAUSE” mode for temporary suspending of weighing process,
- Button for emptying the scale from containers,
- Automatic zeroing during operation,
- Drive protection against overloading.

## Basic technical data:

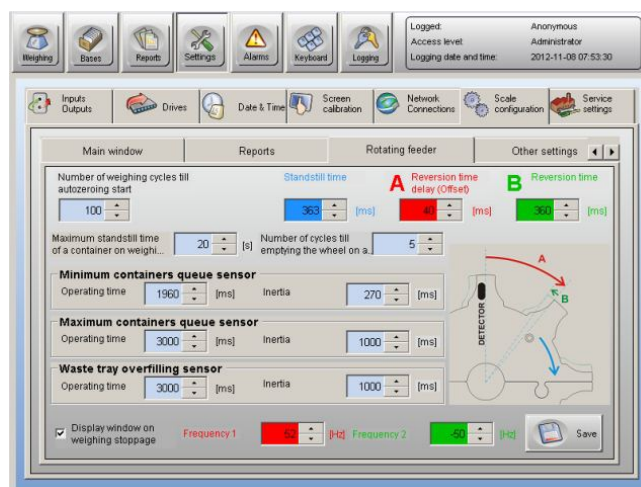
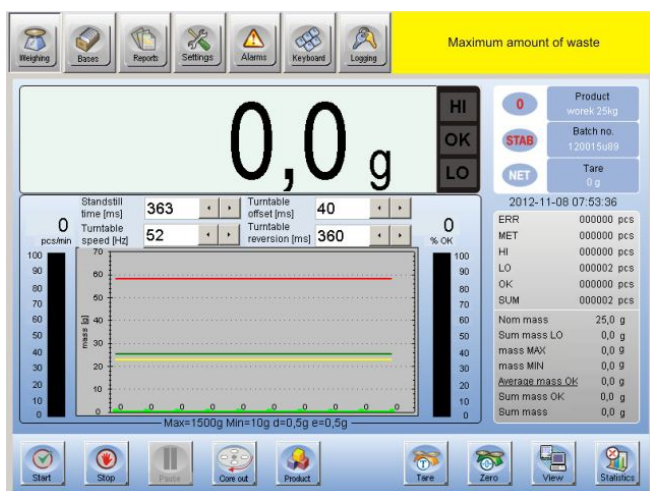
- Industrial Windows Embedded system,
- Dual core industrial computer designed to operate in hard conditions,
- 12" colourful touch screen display,
- Databases supported by SQL Server,
- Interfaces and ports RS232, USB and Profibus\*,
- Ethernet,
- Controlling-informative outputs control,

\*- Profibus module available on client's request (option)



Rotational mechanism is a checkweigher DWR/H series

## Screenshots from the software:



## Cooperation with peripheral devices:

Rotational scale is prepared to cooperate with peripheral devices intended for the checkweigher, and devices form processing line. I/O set provides broad configuration possibilities and full integration of scale with existing processing line.

- Cooperation with dosing device with feedback,
- Cooperation with a barcode scanner,
- Printouts on labeling and receipt printers,
- Remote start and stop of the scale,
- Records from weighing stored on an external computer.

## Technical data:

	DWR 600 H1	DWR 1500 H1	DWR 3000 H1	DWR 6000 H1	DWR 7500 H1
Max capacity	600 g	1500 g	3000 g	6000 g	7500 g
Readability	0,2 g	0,5 g	1 g	2 g	5 g
Tare range	-600 g	-1500 g	-3000 g	-6000 g	-7500 g
Working temperature	0° ÷ +40 °C				
Power supply	230V AC 50Hz				
Working pressure	6 ÷ 8 bar				
Performance	80 pcs / min - single platform version 160 pcs / min dual platform version				
Display	graphic touch screen display				